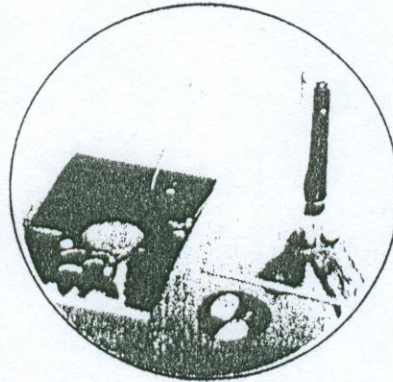


The E-Z Button Press

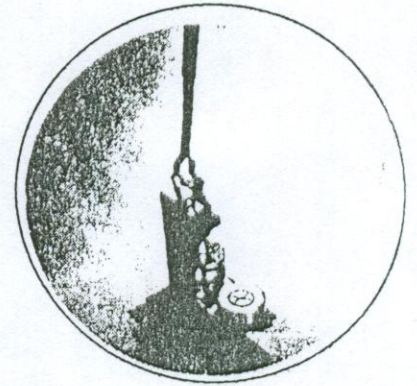
This easy to carry machine weighs about 10 pounds. The craftsmanship is unmatched by any other machine in this price range. The machine makes perfect buttons consistently and uses standard size parts. The circle cutter needed to cut your printed inserts is included with the machine. Button parts using pin backs or mirror backs can be put together effortlessly.



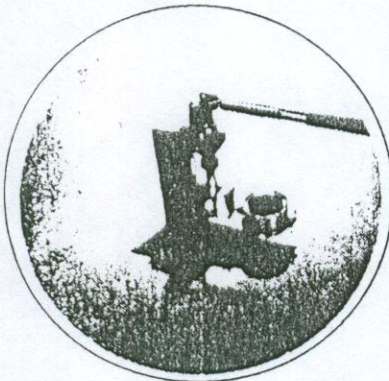
How To Make A Button



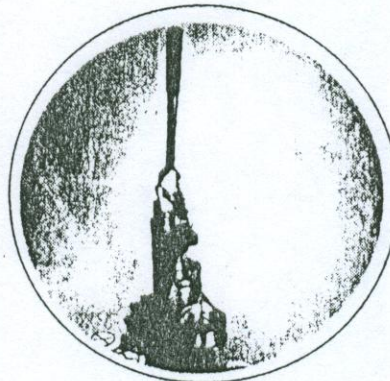
STEP 1 Center post cutter over portion of print to be used as a button. Press firmly and rotate to cut disc. Be certain that the print is cut completely.



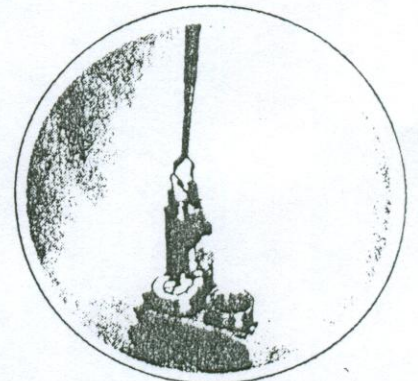
STEP 2 Place button shell (domed metal) in shell die, lip down. Place printed disc (picture up), over button shell. Then place clear mylar disc on top.



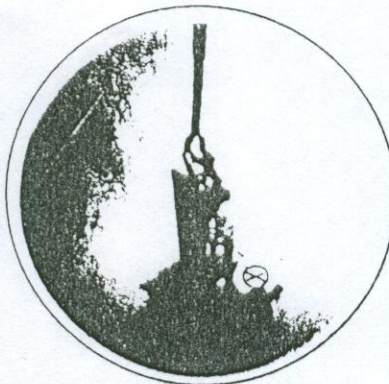
STEP 3 Swing shell die under upper pickup die. Pull handle down, then release handle.



STEP 4 Place pinned back part (pin side down, lip up) in the crimping die.



STEP 5 Swing crimping die under upper pickup die. Pull handle down to crimp parts together, then release.



STEP 6 Swing finished button out. Remove. Admire, and deliver to your customers!

In 15 Seconds . . . A Button is Ready

To Make Mirror Buttons; Follow steps 1, 2, 3, then change step 4 – insert a "collet," lip up, the mirror glass face down, and spacer (bent slightly) to prevent loose mirror. Repeat step 5 and 6. Remove your button with Mirror Back. Admire the finished button, deliver to your customers, and collect your money!